



F A I N

M O D E L S

simulation systems

www.fain.com • 817-540-1000 • 3700 Hwy 121 • Bedford TX, 76021

FAIN MODELS SIMULATION SYSTEMS TRAINING SYSTEM PRODUCTS



F/A-18 SJU-9/10A and SJU-5/6A

Fain Simulation Systems specializes in the F/A-18 NACES SJU-9/10A and SJU-5/6A (shown above) with electric seat eye height adjustment, functional inertia reels, lap belts and all functional handles with electric outputs. All of our products feature true to OEM product colors, decals, and training system functionality. We specialize in complete custom parts and assemblies that meet your training product needs. Any of these products can be customized according to your application requirements.

SIMULATION SYSTEMS PRODUCTS



MK.16G IN

MK.10 ZLH

ACES II F-15K

ACES II F-16

Simulation Systems can supply many different variants of replica simulator ejection seats and cockpit hardware products. We can design, develop, reverse engineer and create your training system parts and tooling per your requirements. We can provide any variant of the ACES II & ACES III ejection seat product lines. ACES II F-16 and ACES II F-15K high fidelity (shown above) are non G-Cueing seats with electric eye height adjustment, shoulder harness, lap belts and all functional handles with electric outputs.

SIMULATION SYSTEMS PRODUCTS



Fain Simulation Systems also specializes in the NACES (shown above), and F/A-18 SJU-5/6A, and SJU-9/10A (shown above) with electric seat eye height adjustment, functional inertia reels, lap belts and all functional handles with electric outputs. All of our products feature true to OEM product colors, decals, and training system functionality. We specialize in complete custom parts and assemblies that meet your training product needs. Any of these products can be customized according to your application requirements.

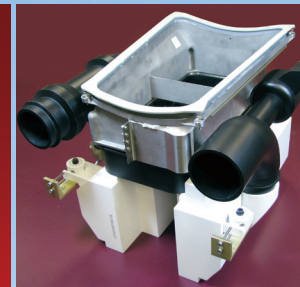
SOLUTIONS FOR INNOVATIVE SIMULATION SYSTEMS



CST-100 Capsule Seat



F-22 AMAD



F-22 Heat Exchanger



Ejection Mode Select Handle Assembly

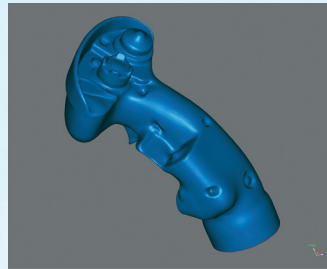
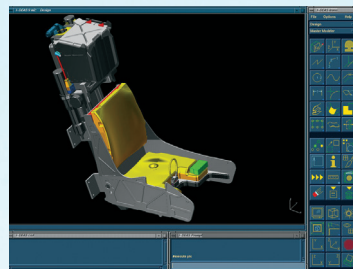
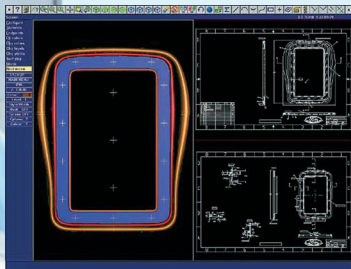


THROTTLE QUADRANTS • FLIGHT CONTROLS (HANDLES SHOWN)
SIMULATION HARDWARE • MANY COTS SOLUTIONS
SERIES RUN OR 1 OFF CUSTOMS • PART TASK TRAINERS

SIMULATION SYSTEMS ENGINEERING

QUICKLY TRANSFORM NEW IDEAS
INTO GREAT PRODUCTS USING:

- SOLIDWORKS
- MASTERCAM
- CATIA



FAIN MODELS MANUFACTURING



Our Aerospace machining capabilities are extensive. We offer state of the art machining and parts fabrication capabilities. We have a wide array of equipment including several HURCO CNC Machining centers, Okuma CNC lathes, Three 5 AXIS CNC Mills, 5 KOMO Routers, a Robofil wire EDM machine, sheet metal shop and multi process weld shop.

Fain Models engineers utilize an API Omnitrack II laser tracking measurement system to develop accurate datum sets to capture critical dimensions and locations. For organic surface creation we use White-light surface scanning technology. This enables us to reverse engineer and recreate any part no matter how complex and ensure the highest fidelity possible.

SOME OF SIMULATION SYSTEMS CUSTOMERS

LOCKHEED MARTIN • TRU SIMULATION & TRAINING
THE BOEING COMPANY • L-3 LINK SIMULATION & TRAINING
CRANFIELD AEROSPACE SOLUTIONS, LTD.

FAIN MODELS SIMULATION SYSTEMS TRAINING SYSTEM PRODUCTS



We look forward to the opportunity to serve your training systems, engineering, design, and tooling requirement needs. We assure a quick response with high quality results at competitive prices.

Please Contact:

Glenn Freeman

Business Development Manager

gfreeman@fain.com

Brandon Beasley

Operations Manager

brandon@fain.com

www.fain.com • 817-540-1000 • 3700 Hwy 121 • Bedford TX, 76021